



PENTAIR BERKELEY

7TMH SERIES

230 GPM, 60HZ, NPT, 8" MOTORS

Section	ST-7TMH
Page	1.0
Date	June 1, 2018
Supersedes	March 1, 2016

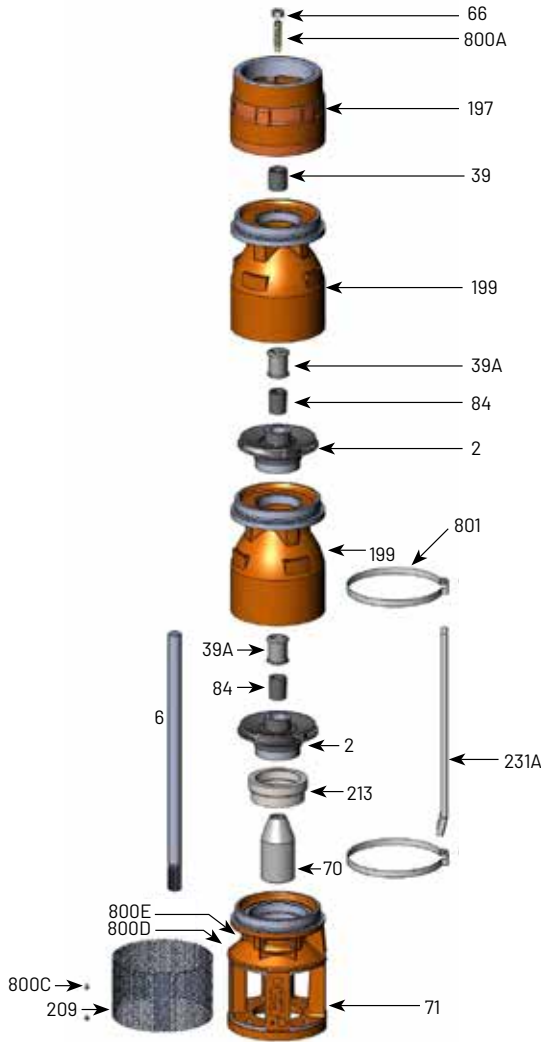


TABLE 1 - 7TMH-230 Common Parts Group

Item Number	Part Number	Description	Required Qty
2	See Table 3	Impeller	1 Per Stage
6	See Table 4	Shaft	1
39	M15886	Vesconite Bearing	1
39A	S13636	Neoprene Bearing	1 Per Stage
66	M15881	Upthrust Nut, 1/2-13 LH	1
70	B87061	8" Motor Coupling	1
71	M16573	7TMH 8" Motor Suction Bracket	1
84	S05301	1" Collet	1 Per Stage
197	M16387	7TMH discharge 5 x 6 NPT	1
199	B86883	7TMH-230 Bowl (incl. Neoprene Bearing)	1 Per Stage
209	M16578	Suction Screen	1
213	M16596	Insert 7TMH-230 8" Suction Bracket	1
231A	M10252	Cable guard, 8" material	1
800A	M15882	Upthrust Screw, 1/2-13 LH	1
800C	M15937	Screen Screw, 8-32 x 3/8 Panhead	2
800D	M10199	Rivet, 3/32	2
800E	M09653	Nameplate	1
801	M10102	7TMH Cable Guard Clamp	2
Not Illustrated	M09970	Tag, Upthrust Adjustment	1
Not Illustrated	B87159	Bolt Kit, 8" Motor	1
Not Illustrated	BE972	Owner's Manual	1

Note 1: B86886 includes items 39, 66, 197, 800A
 Note 2: B86885 includes 71 and 213

TABLE 2 - Additional Staging

Item Number	Part Number	Description	Required Qty
39A	S13636	Neoprene Bearing	1 Per Stage
	S10708	Bronze Bearing	
199	B86883	7TMH-230 Bowl (incl. Neoprene Bearing)	1 Per Stage
84	S05301	1" Collet	1 Per Stage
2	See Table 3	Impeller	1 Per Stage

Note 3: Bronze bearing may be used in place of the standard Neoprene Bearing.

TABLE 3

Item Number	Part Number	Description	Required Qty
2	M16593	7TMH-230 "A" Impeller 5.983"	See Table 4
	M16594	7TMH-230 "B" Impeller 5.773"	
	M16595	7TMH-230 "C" Impeller 5.601"	
	M16589	7TMH-230 "D" Impeller 5.461"	

TABLE 4 - 60 Hz Staging Requirements Build Table

Series	HP/kW	Stages	Trim				416 SS shaft		Ion-nitride shaft		Shaft Length (in/mm)	Cable Guard Length ¹	Assembled pump length (motor not included)
			"A"	"B"	"C"	"D"	Pump catalog number	416 SS Shaft p/n ⁶	Pump catalog number	Ion Nitride Shaft p/n ¹			
7TMH40-230	40/29.8kW	6				6	B87045	M16099	B87045N	M16132	55.25 in/1403.35 mm	52.5 in/1333.5 mm	60.75 in/1544 mm
7TMH50-230	50/37.3kW	6	1	3	2		B87046	M16099	B87046N	M16132	55.25 in/1403.35 mm	52.5 in/1333.5 mm	60.75 in/1544 mm
7TMH60-230	60/44.7kW	7	3	1	3		B87047	M16841	B87047N	M16843	63.25 in/1606.55 mm	60.5 in/1536.7 mm	68.75 in/1747 mm
7TMH75-230	75/55.9kW	9	3	1	5		B87048	M16282	B87048N	M16333	79.25 in/2012.95 mm	76.5 in/1943.1 mm	85.87 in/2182 mm
7TMH100-230	100/74.6kW	13	1	1	11		B87049	M16854	B87049N	M16854N	111.25 in/2825.75 mm	108.5 in/2755.9 mm	117.87 in/2994 mm

Note 4: Effective assembled pump diameter with cable guard lying flat against pump is 7.5 inches

Note 5: 6" and 8" pumps use the same shafts.

Note 6: Cable guard M10252 sold in 8' (2.44M) lengths only