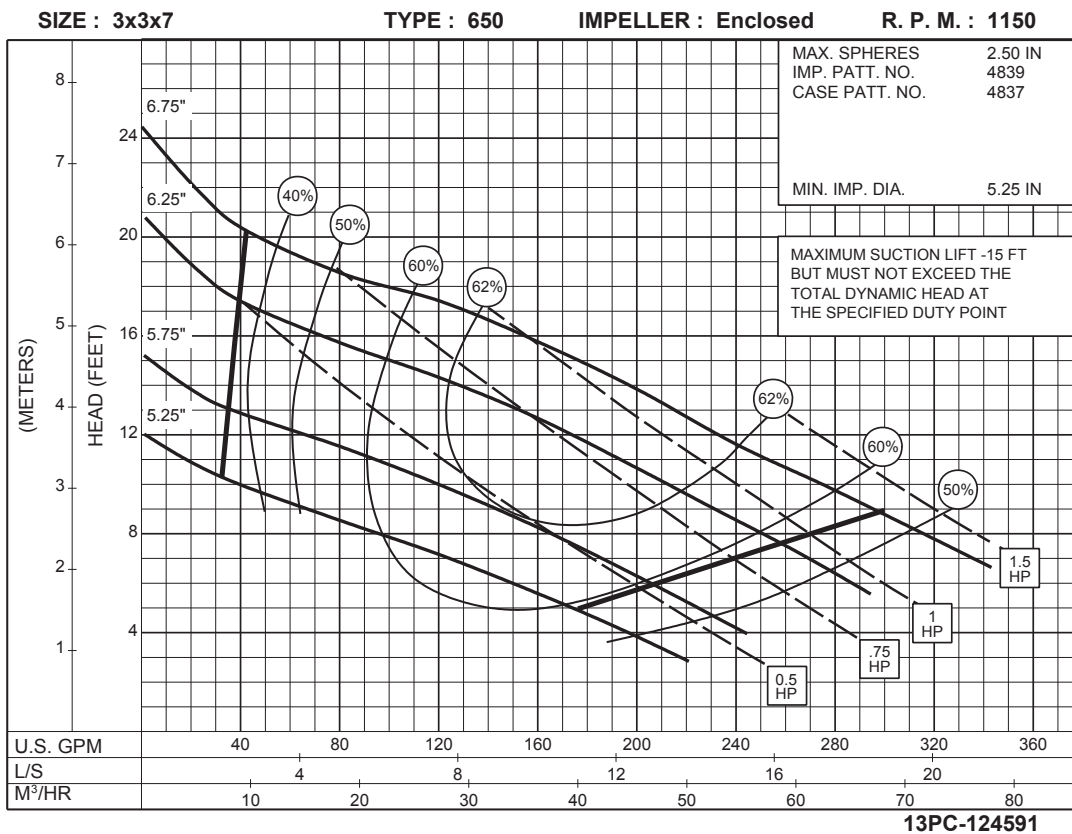
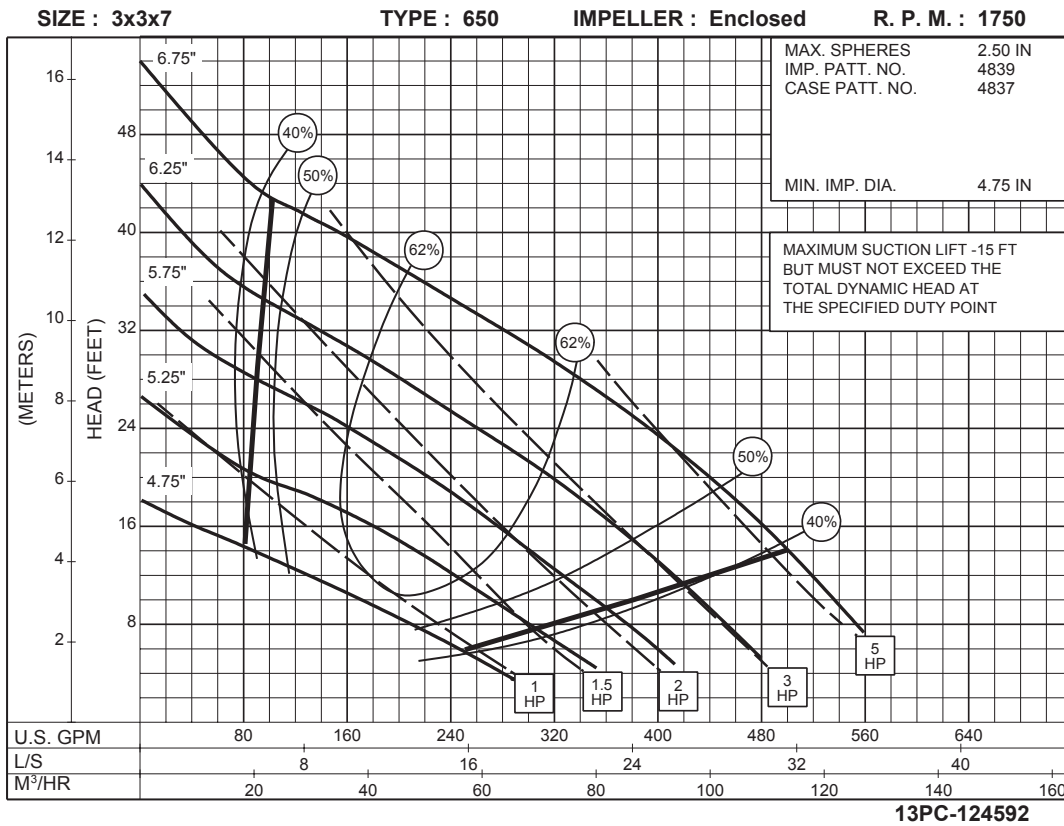


# 3 x 3 x 7 SERIES 650A

ENCLOSED IMPELLER

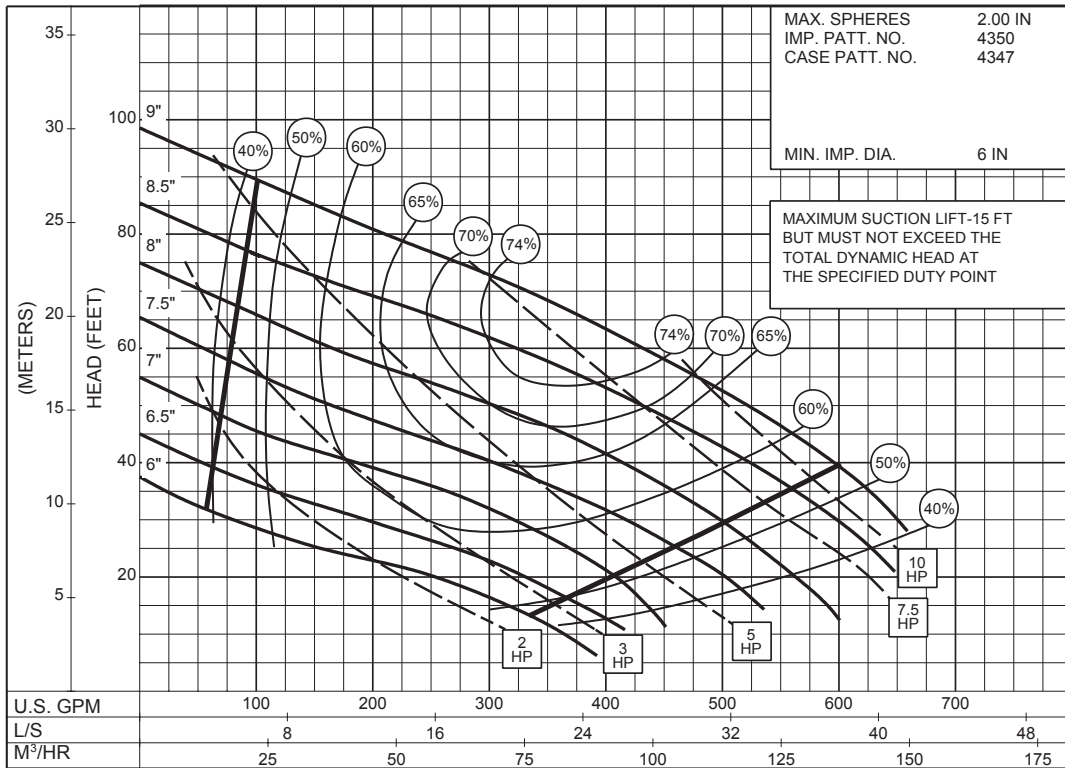


# 3 x 3 x 9 SERIES 650A

## ENCLOSED IMPELLER

**1750**  
RPM

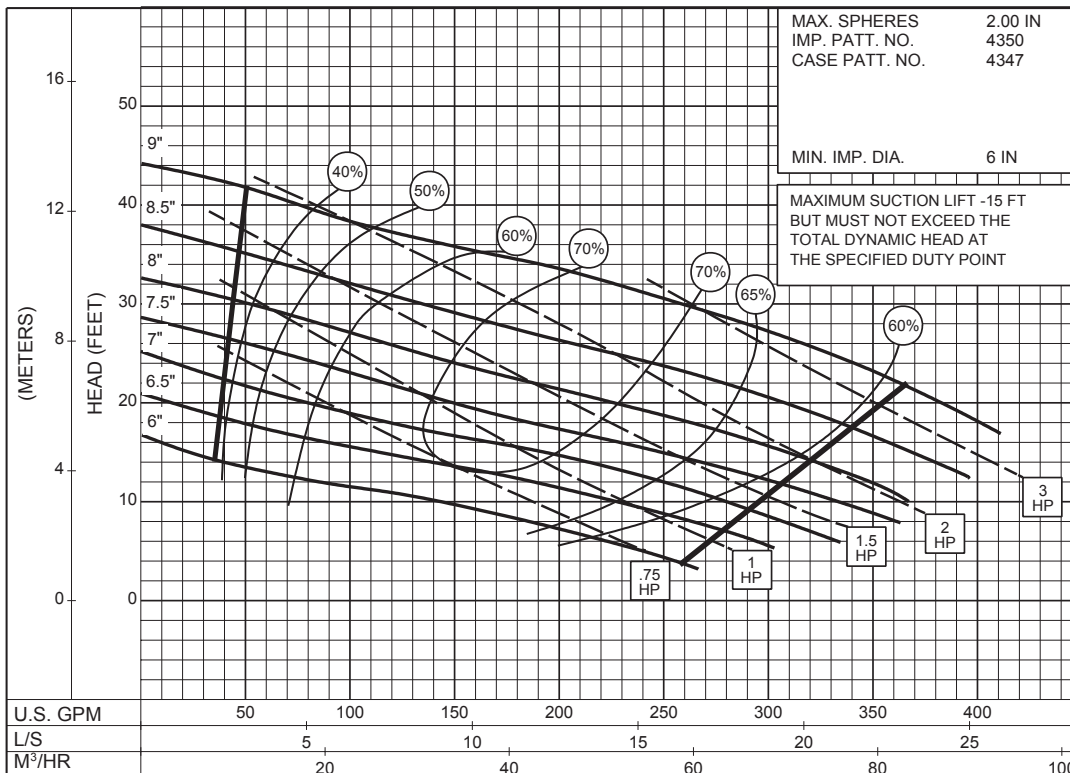
SIZE : 3x3x9      TYPE : 650      IMPELLER : Enclosed      R. P. M. : 1750



13PC-124590

**1150**  
RPM

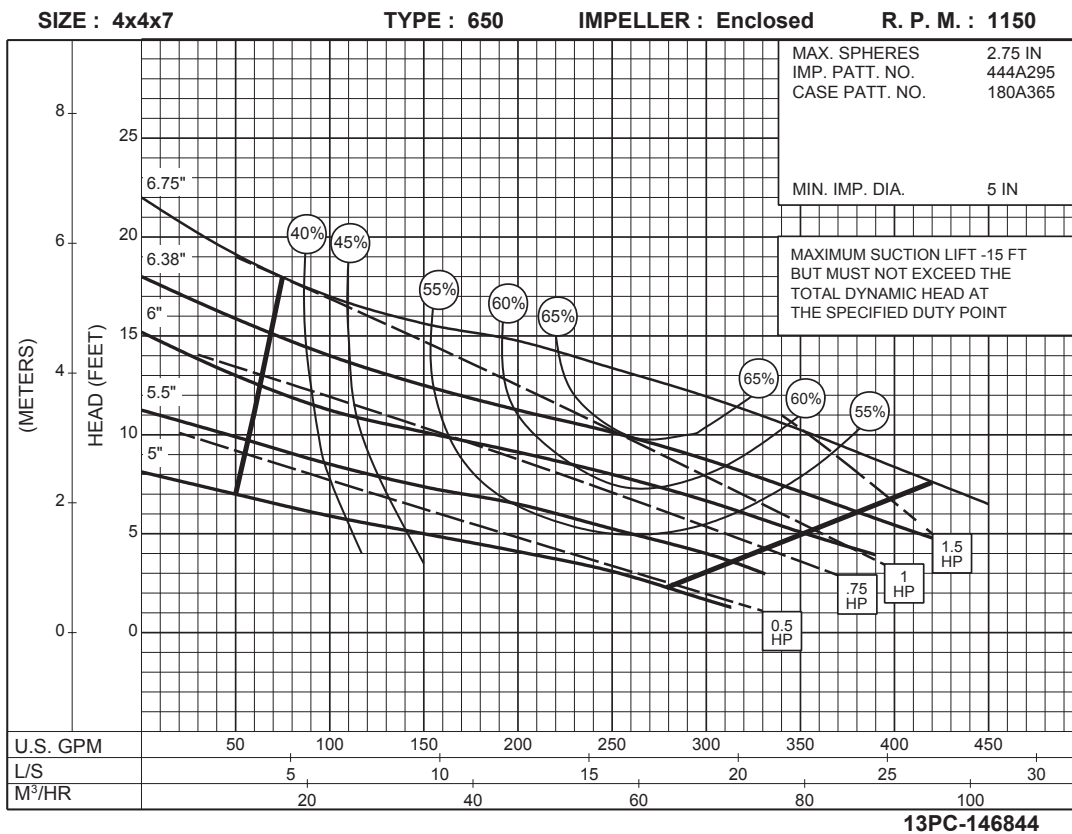
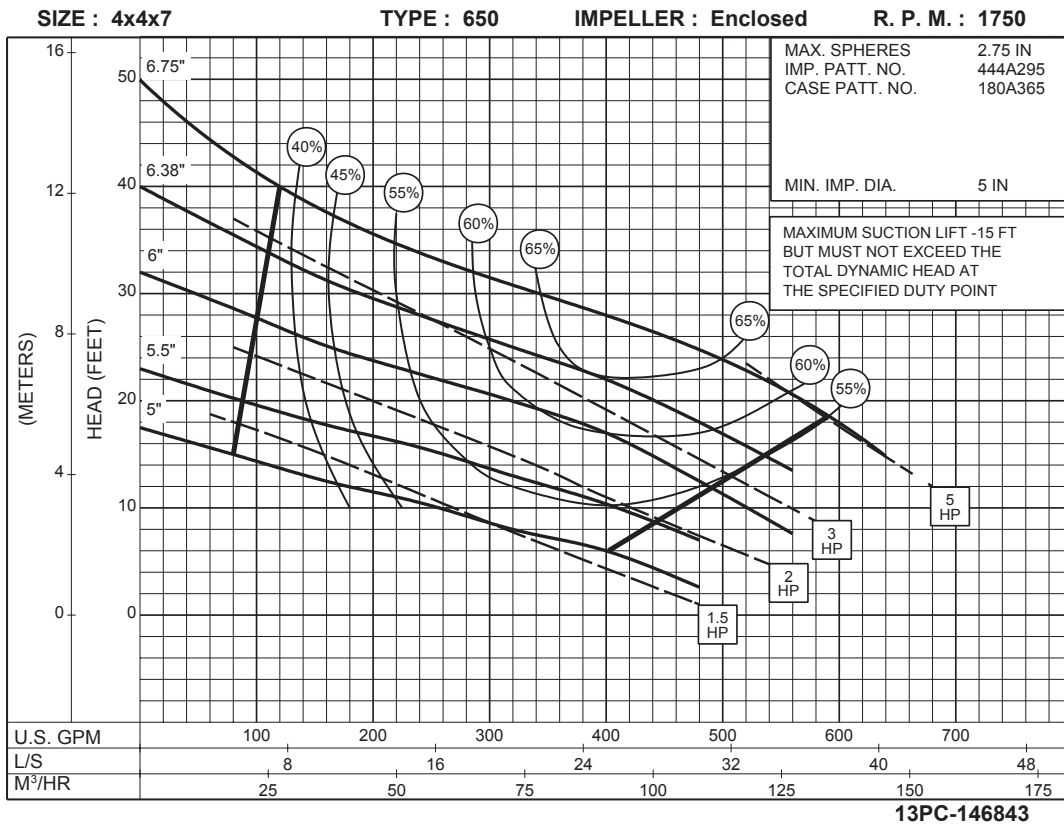
SIZE : 3x3x9      TYPE : 650      IMPELLER : Enclosed      R. P. M. : 1150



13PC-124589

# 4 x 4 x 7 SERIES 650A

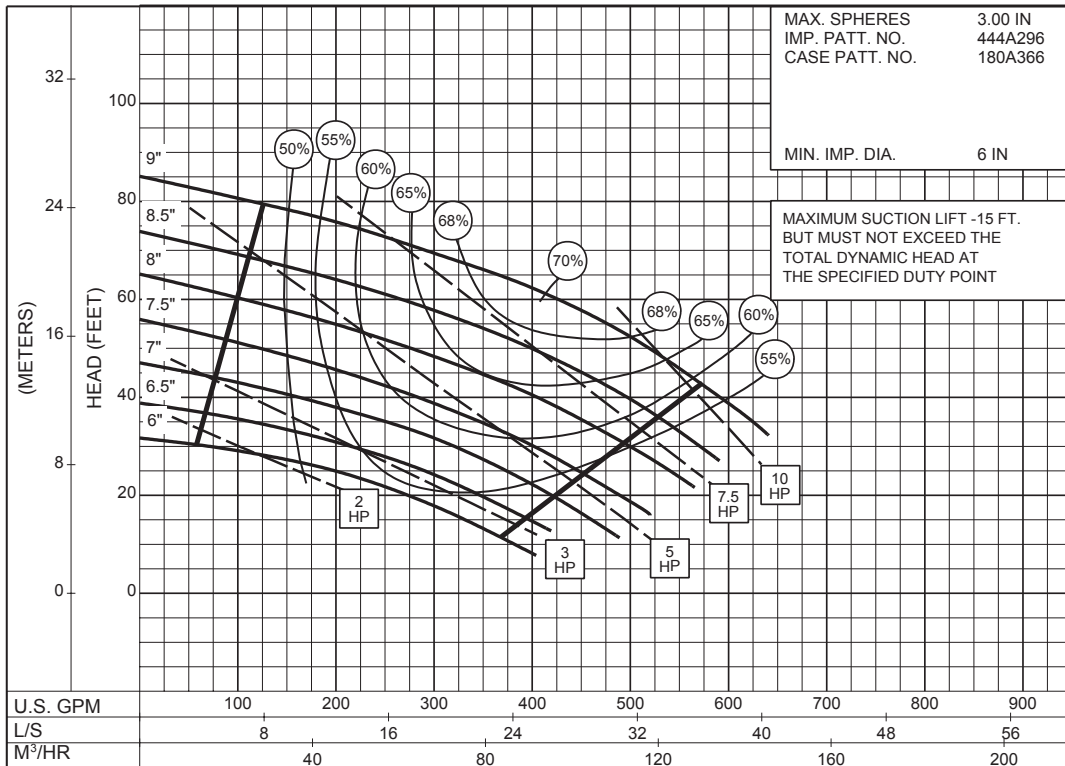
## ENCLOSED IMPELLER



# 4 x 4 x 9A SERIES 650A

## ENCLOSED IMPELLER

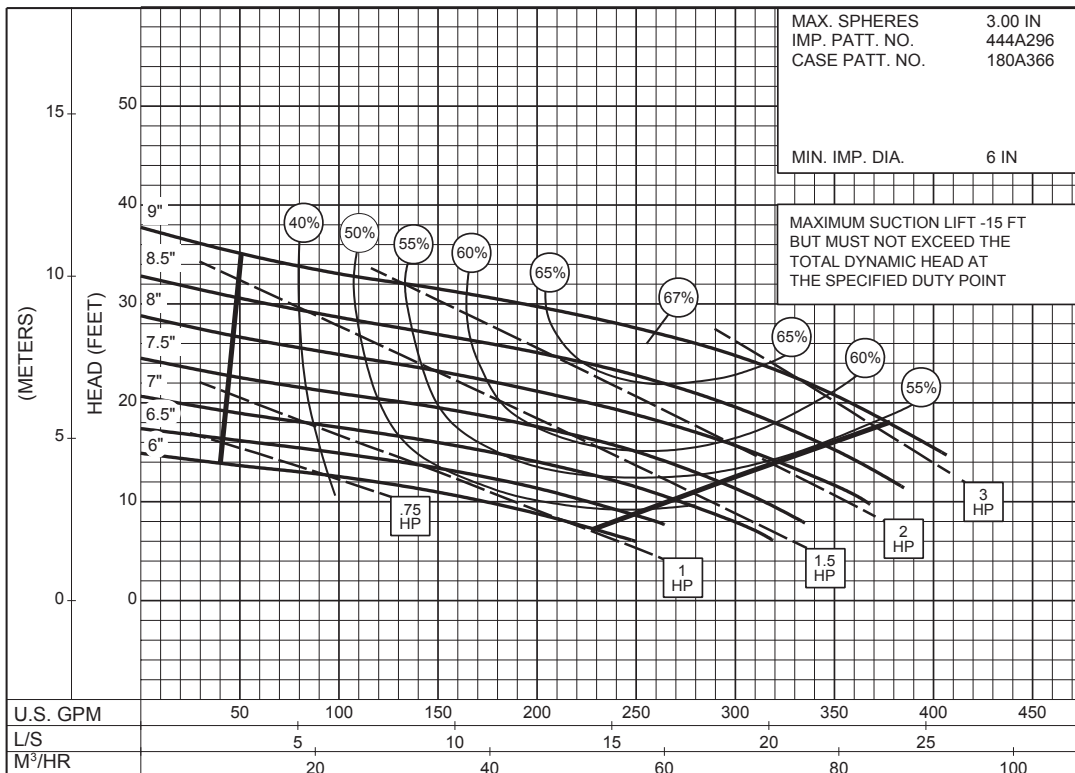
SIZE : 4x4x9A      TYPE : 650      IMPELLER : Enclosed      R. P. M. : 1750



13PC-147001

**1750**  
RPM

SIZE : 4x4x9A      TYPE : 650      IMPELLER : Enclosed      R. P. M. : 1150

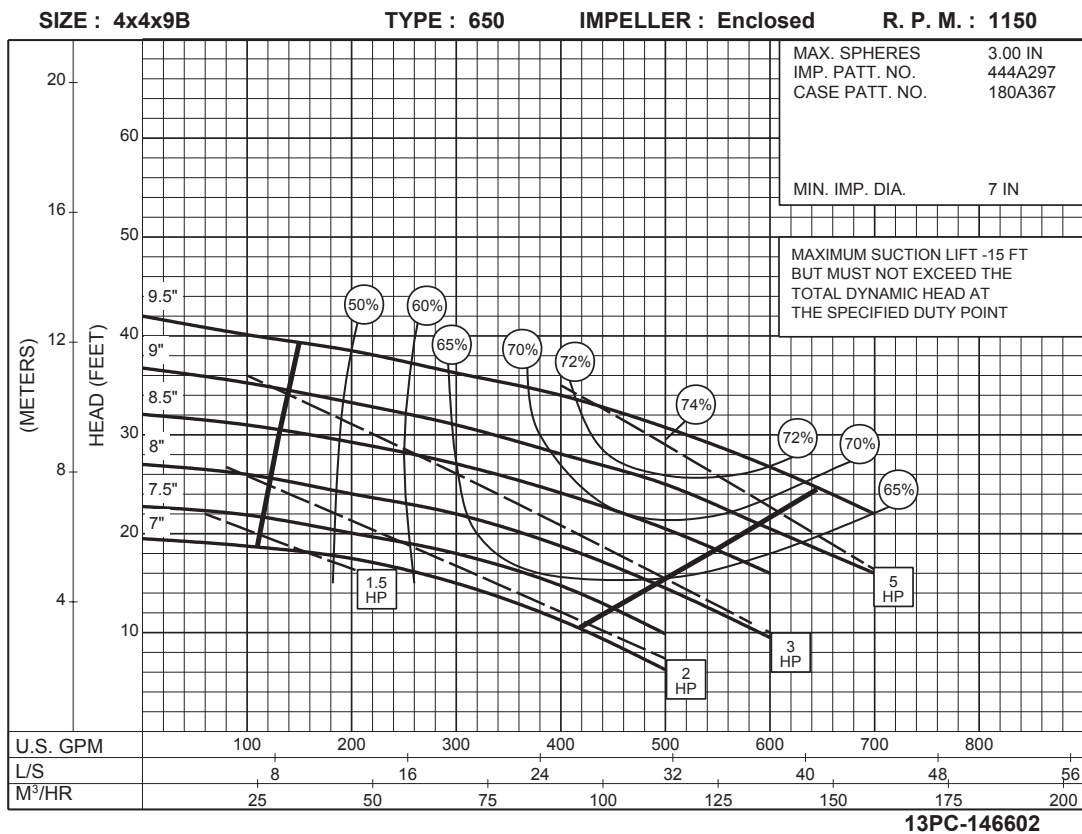
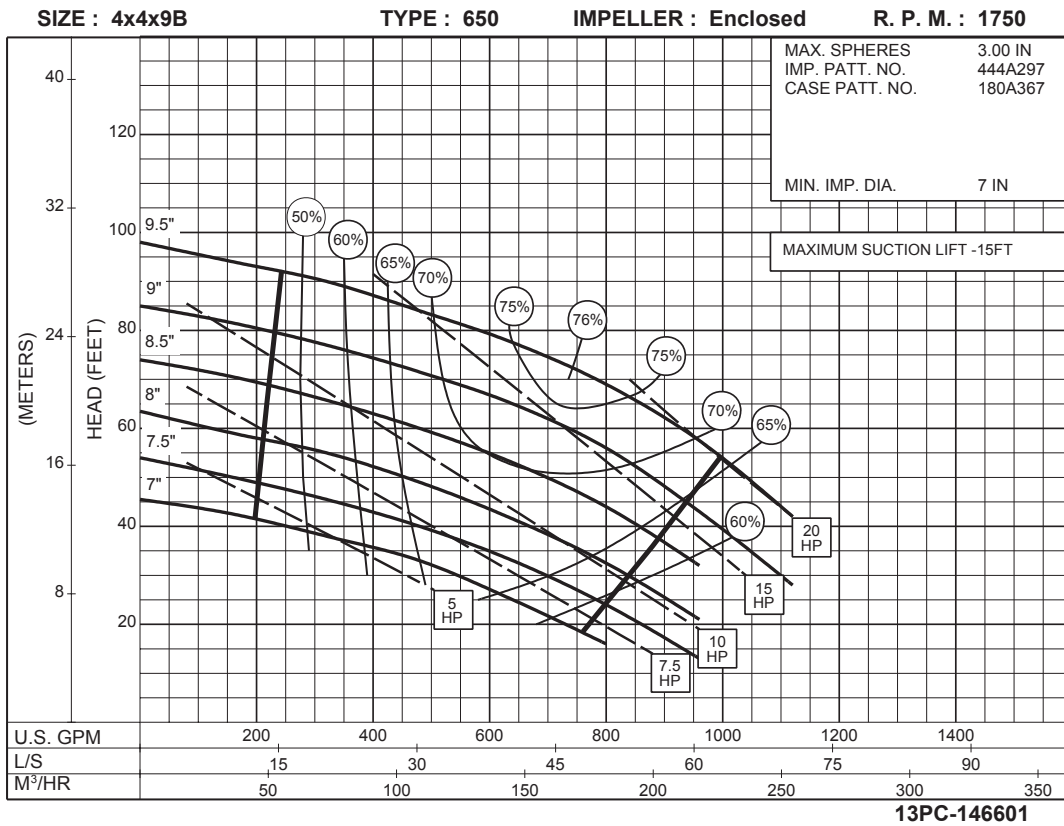


13PC-147002

**1150**  
RPM

# 4 x 4 x 9B SERIES 650A

ENCLOSED IMPELLER



**4 x 4 x 9B**  
**SERIES 650A**

ENCLOSED IMPELLER

SIZE : 4x4x9B

TYPE : 650

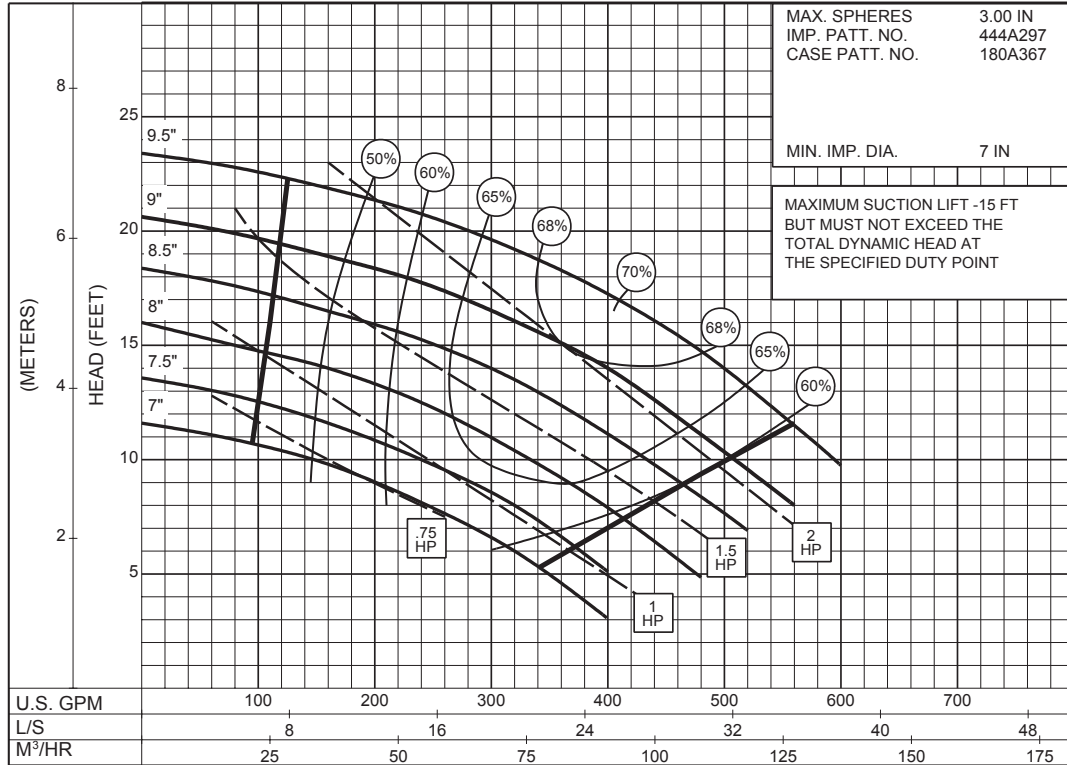
IMPELLER : Enclosed

R. P. M. : 875

MAX. SPHERES 3.00 IN  
IMP. PATT. NO. 444A297  
CASE PATT. NO. 180A367

MIN. IMP. DIA. 7 IN

MAXIMUM SUCTION LIFT - 15 FT  
BUT MUST NOT EXCEED THE  
TOTAL DYNAMIC HEAD AT  
THE SPECIFIED DUTY POINT

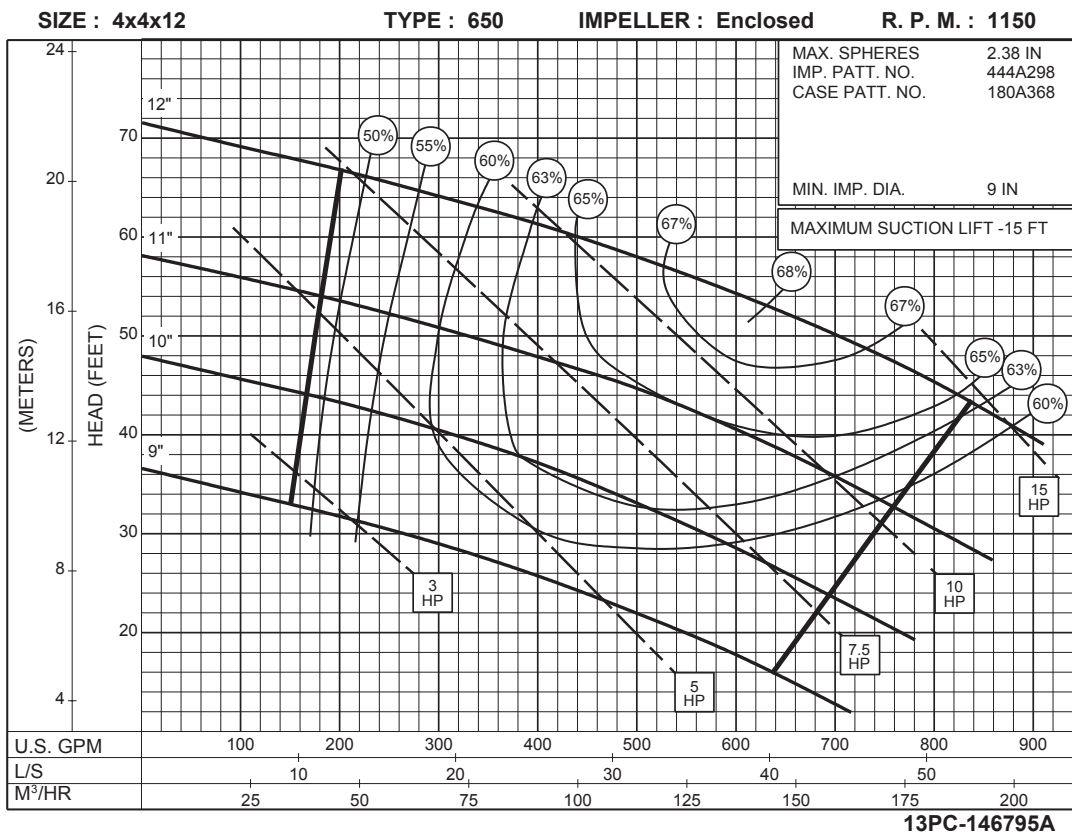
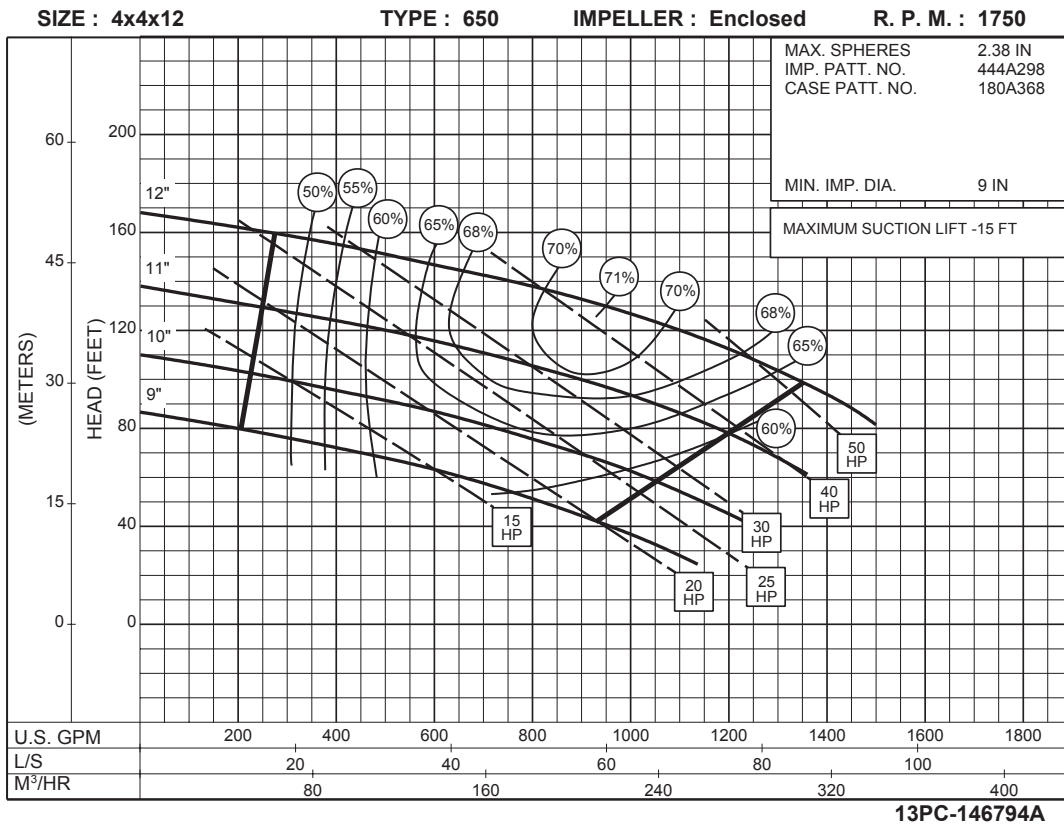


**875**  
RPM

13PC-146603

# 4 x 4 x 12 SERIES 650A

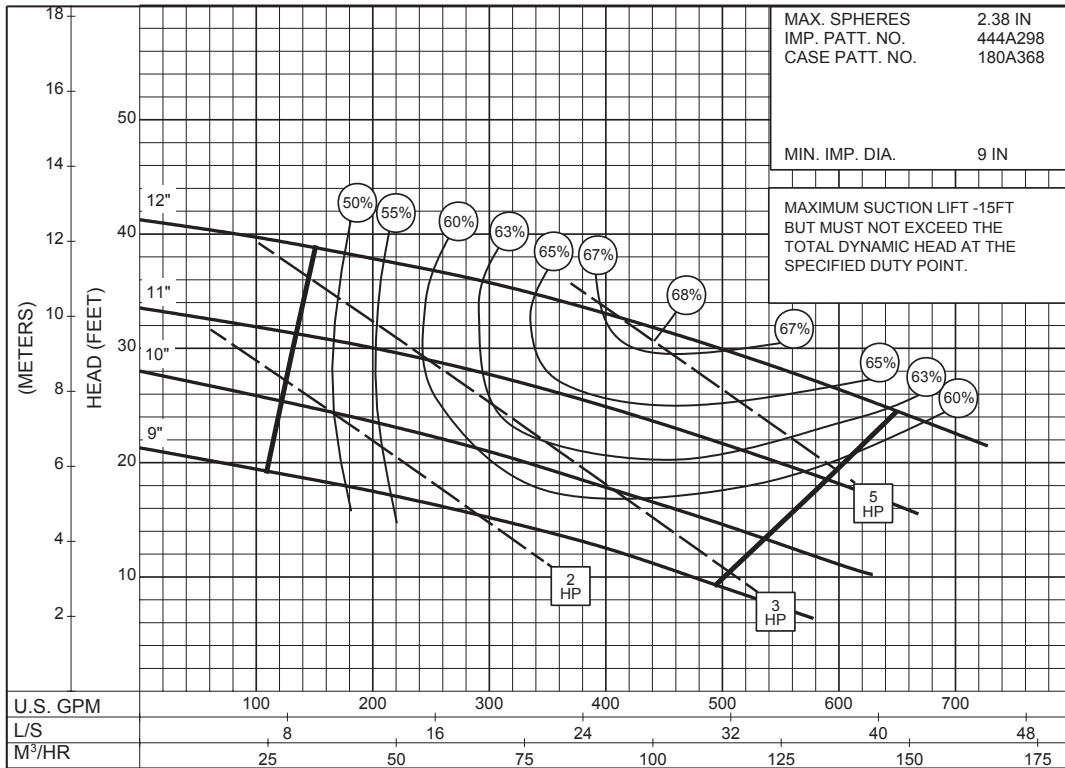
ENCLOSED IMPELLER



# 4 x 4 x 12 SERIES 650A

## ENCLOSED IMPELLER

SIZE : 4x4x12      TYPE : 650      IMPELLER : Enclosed      R. P. M. : 875



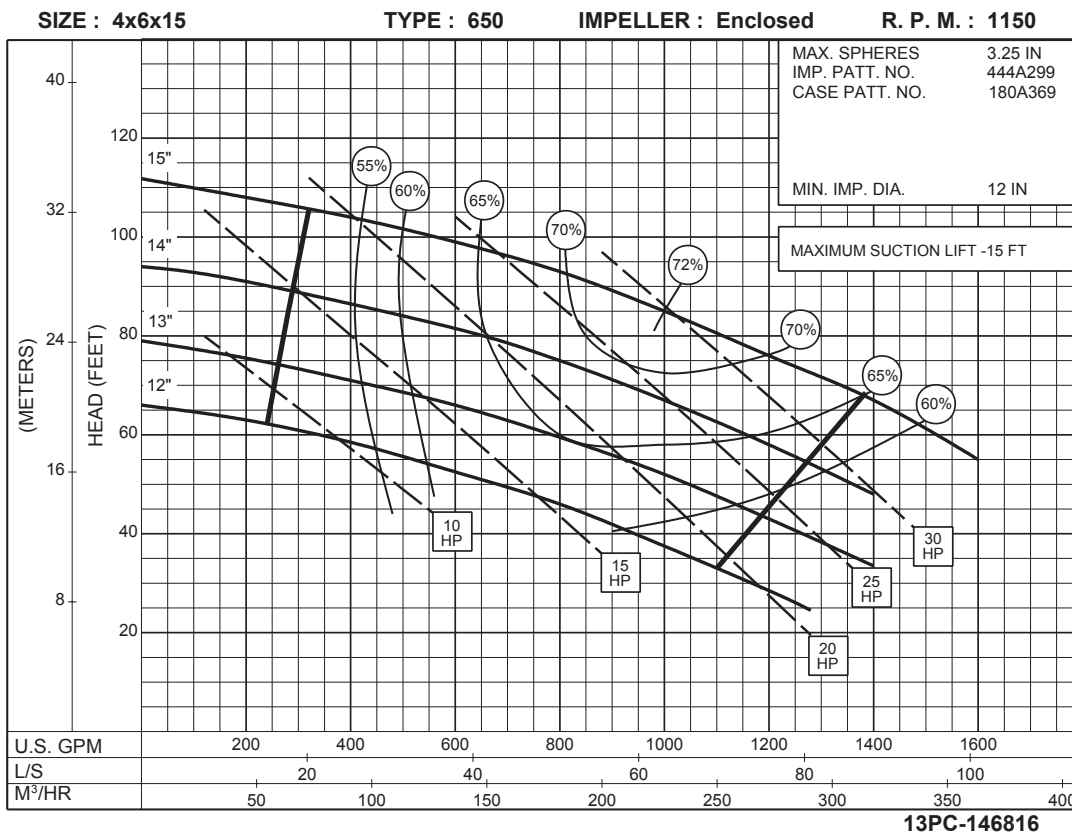
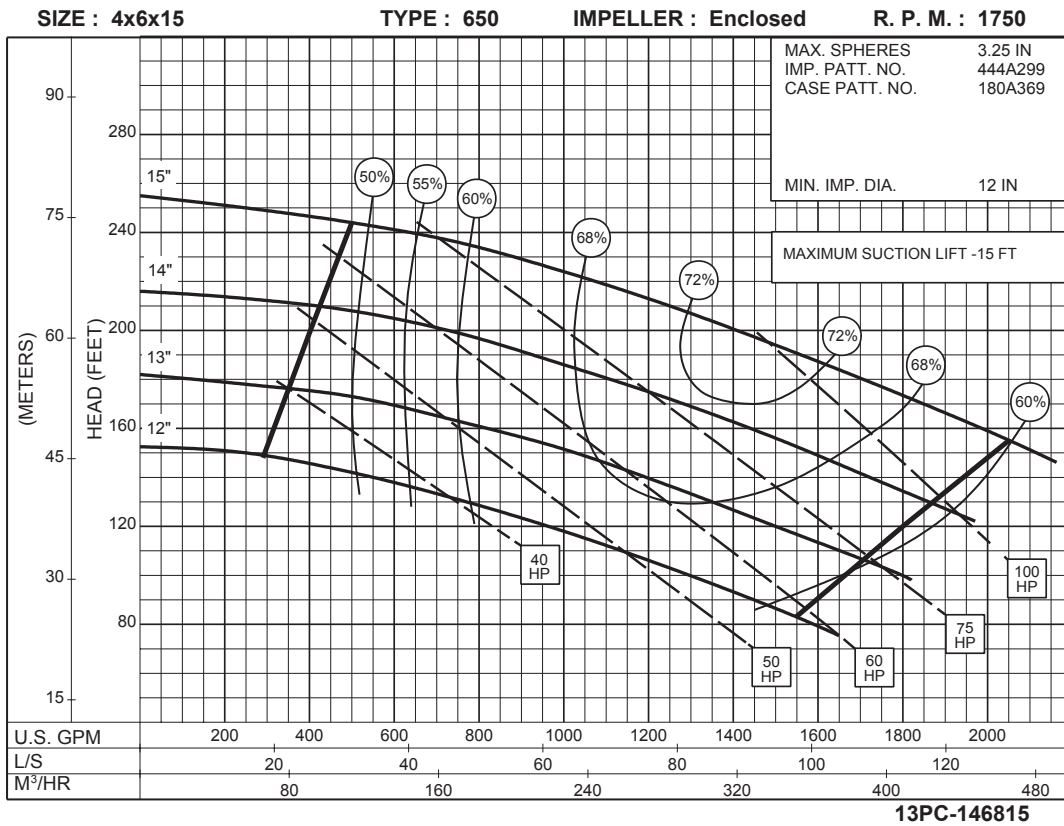
**875**  
RPM

13PC-146796A



# 4 x 6 x 15 SERIES 650A

ENCLOSED IMPELLER

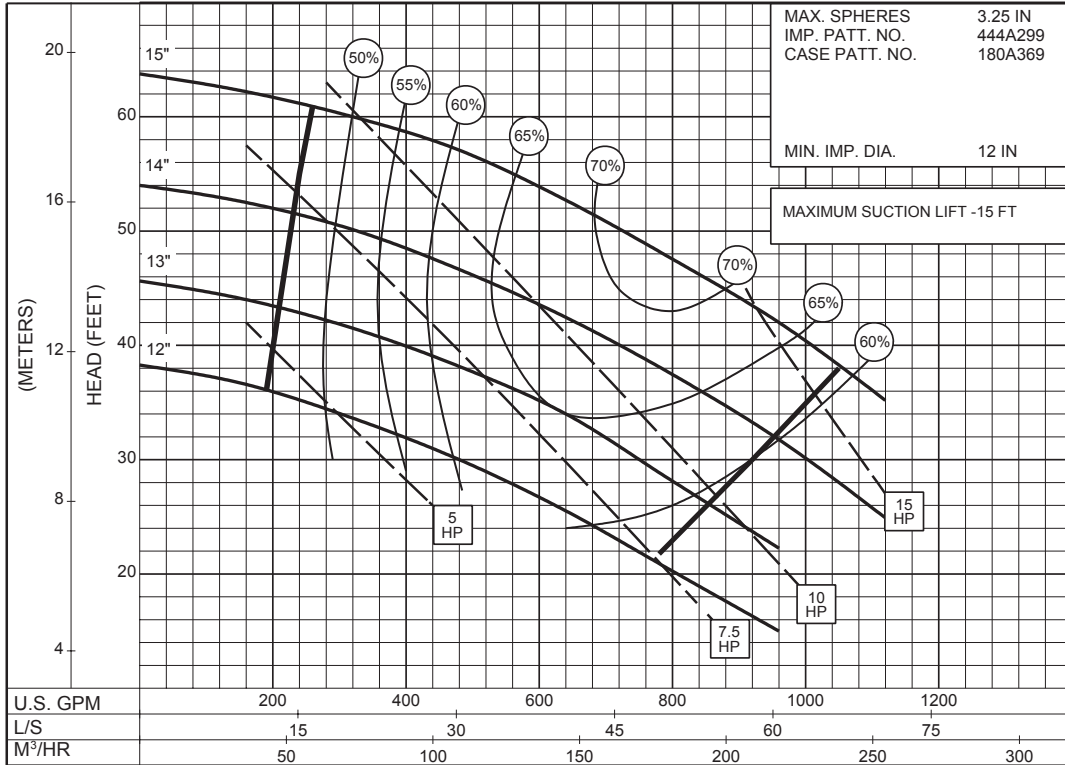


**4 x 6 x 15**  
**SERIES 650A**

ENCLOSED IMPELLER

**875**  
RPM

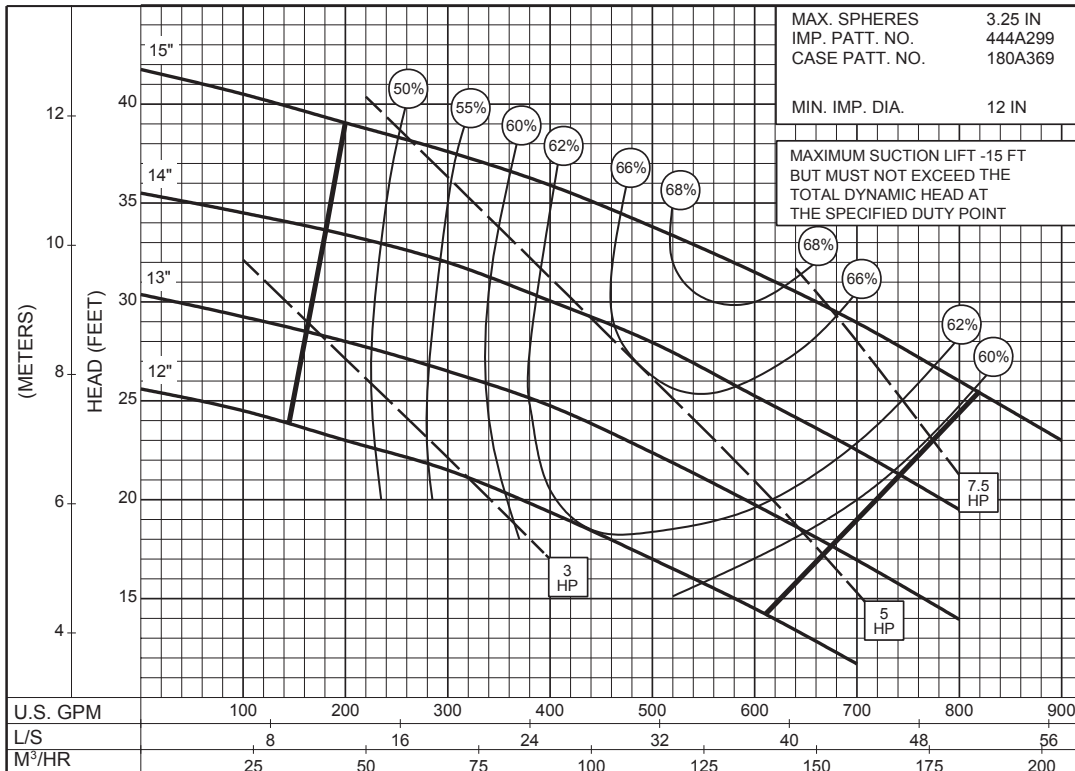
SIZE : 4x6x15 TYPE : 650 IMPELLER : Enclosed R. P. M. : 875



13PC-146817

**700**  
RPM

SIZE : 4x6x15 TYPE : 650 IMPELLER : Enclosed R. P. M. : 700



13PC-146818